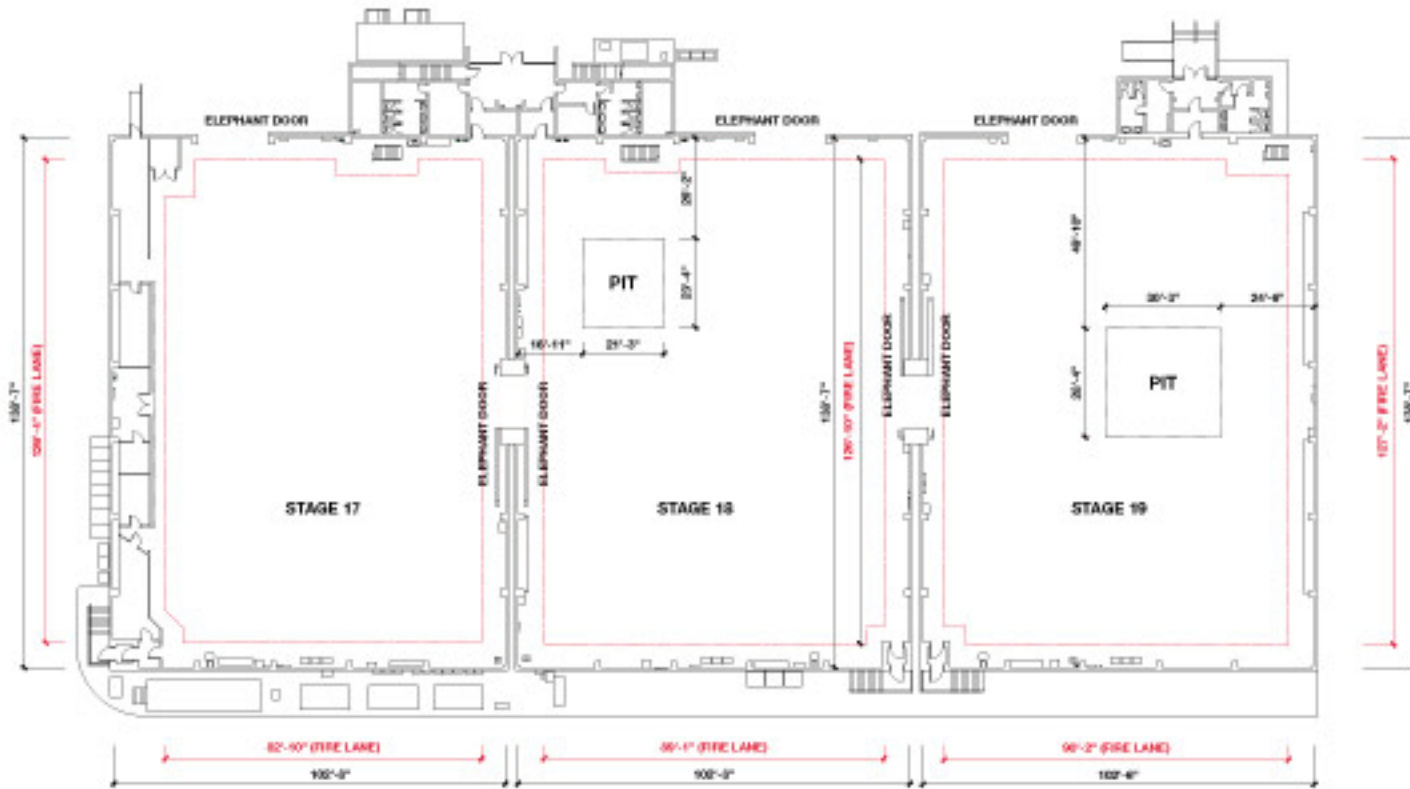
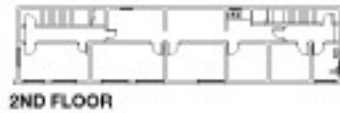


# Stages 17, 18 & 19



## STAGE 17

**STAGE SIZE:** (102' x 138') 14,076 sq. ft.

**LIVE LOAD CAPACITY OF FLOOR:** Wood floor over concrete

**HEIGHT:** 35' to the permanents with catwalks above

**FALL PROTECTION:** 100% Tie-off Horizontal Lifeline system

**ELECTRICAL:**

A.C. Production Lighting: 9000/3000 amps / 120/208 volts

Basic House/Building Power: 450 amps / 120/240 volts / Single Phase

Power for Equipment: 3 Phase: 300 amps / 240 volts\*

\*Local 40 tie-in required

**ELEPHANT DOORS:** One entrance: 18' 6" Wide x 24' High

**BUILT-IN ROOMS:** 4 Gold Rooms

**HVAC:** Silent air conditioning and heating

**WATER:** On three perimeter walls

## STAGE 18

**STAGE SIZE:** (102' x 138') 14,076 sq. ft.

**LIVE LOAD CAPACITY OF FLOOR:** Wood floor over concrete

**HEIGHT:** 35' to the permanents with catwalks above

**FALL PROTECTION:** 100% Tie-off Horizontal Lifeline system

**ELECTRICAL:**

A.C. Production Lighting: 6000/2000 amps / 120/208 volts

Basic House/Building Power: 450 amps / 120/240 volts / Single Phase

Power for Equipment: 3 Phase: 300 amps / 240 volts\*

\*Local 40 tie-in required

**ELEPHANT DOORS:** One entrance: 18' Wide x 24' High

**HVAC:** Silent air conditioning and heating

**WATER:** On four perimeter walls

## STAGE 19

**STAGE SIZE:** (102' x 138') 14,076 sq. ft.

**LIVE LOAD CAPACITY OF FLOOR:** Wood floor over concrete

**HEIGHT:** 35' to the permanents with catwalks above

**FALL PROTECTION:** 100% Tie-off Horizontal Lifeline system

**ELECTRICAL:**

A.C. Production Lighting: 9000/3000 amps / 120/208 volts

Basic House/Building Power: 450 amps / 120/240 volts / Single Phase

Power for Equipment: 3 Phase: 300 amps / 240 volts\*

\*Local 40 tie-in required

**ELEPHANT DOORS:** One entrance: 18' Wide x 24' High

**HVAC:** Silent air conditioning and heating

**WATER:** On four perimeter walls

**FOX STUDIOS  
PRODUCTION SERVICES**  
310.369.2786 / 310.369.4231



**FOX STUDIOS**  
10201 W. Pico Blvd.  
Los Angeles, California 90035  
310.FOX.INFO / (f)310.969.0468  
www.foxstudios.com