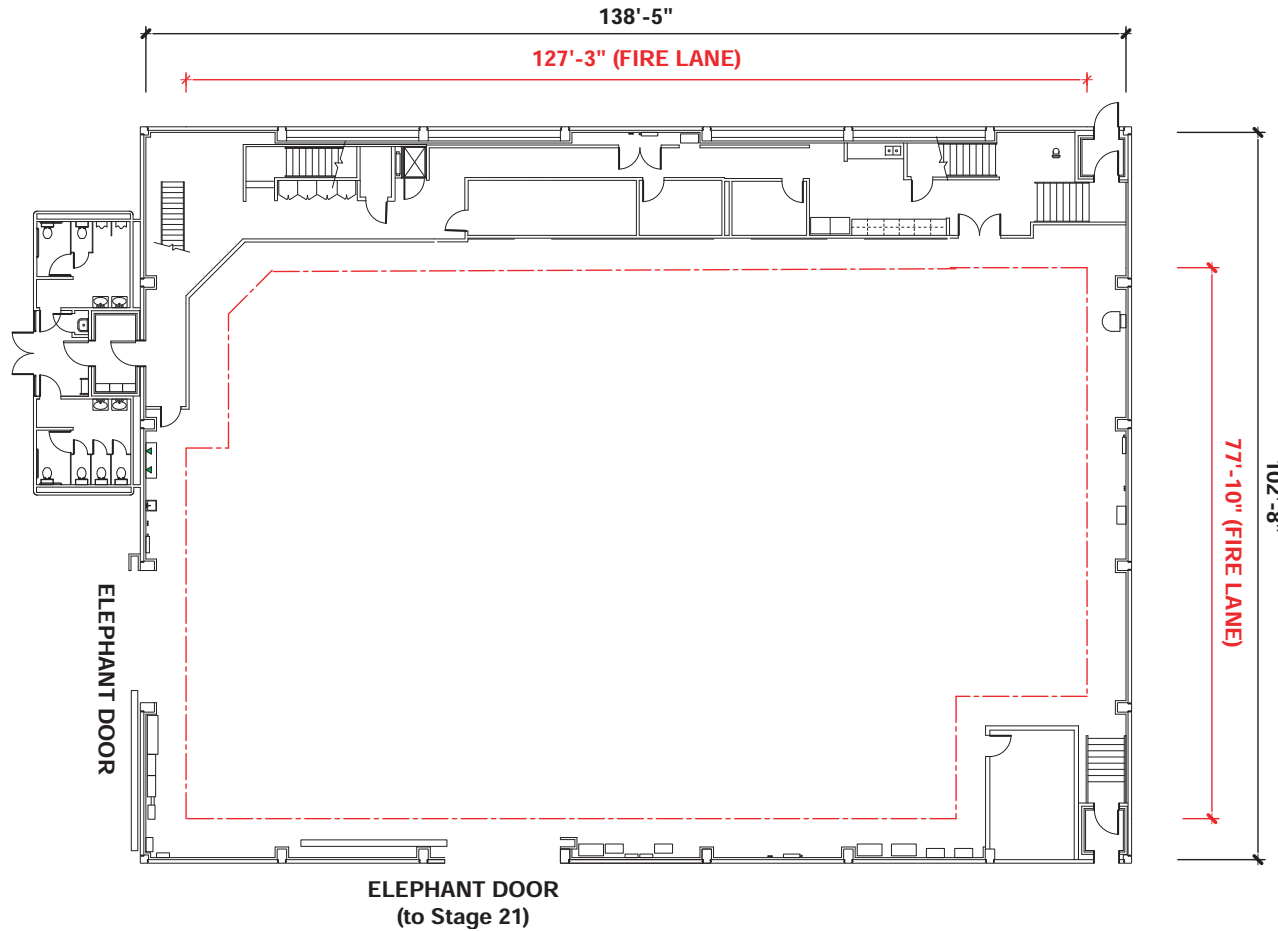
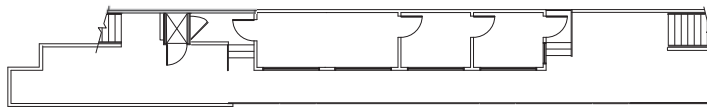


Stage 22

2ND FLOOR



STAGE SIZE:

(102' x 138') 14,076 sq. ft.*
Audience rated A-3
Maximum crew & audience = 299
Bleacher Package available

LIVE LOAD CAPACITY OF FLOOR:

Wood floor over concrete

HEIGHT:

35' to the permanents with catwalks above

BUILT-IN ROOMS:

Dimmer Room, Camera Room, Sound Booth, Dimmer Board Room, Green Room, 4 Support Rooms

AUDIENCE CAPACITY:

Approx. 175

FALL PROTECTION:

100% Tie-off Horizontal Lifeline system

ELECTRICAL:

A.C. Prod. Lighting: 750 KVA Transformer
120/208 volts
1-400 amp & 2-800 amp bull switches
4800 total amps

Basic House/Building Power: 600 amps
120/240 volts
Single Phase

AC Spider: 225 amps
120/240 volts
Single Phase from
Basic House Power

Power for Equipment: 3 Phase:
350 amps
240 volts**
**Local 40 tie-in required

D.C. Lighting: Available upon request

ELEPHANT DOORS:

Two doors:
16' Wide x 14' High (interior door)
18' Wide x 24' High

HVAC:

Silent air conditioning

WATER:

On three perimeter walls
Sink on west wall

*Stage Dimensions to be field verified.

Downloadable PDF available at www.foxstudiosstages.com

**FOX STUDIOS
PRODUCTION SERVICES**
310.369.2786 / 310.369.4000

™ & © 2010 Fox and its related entities. All rights reserved.



FOX STUDIOS

10201 W. Pico Blvd.
Los Angeles, California 90035
310.FOX.INFO / (f)310.969.0468
www.foxstudios.com