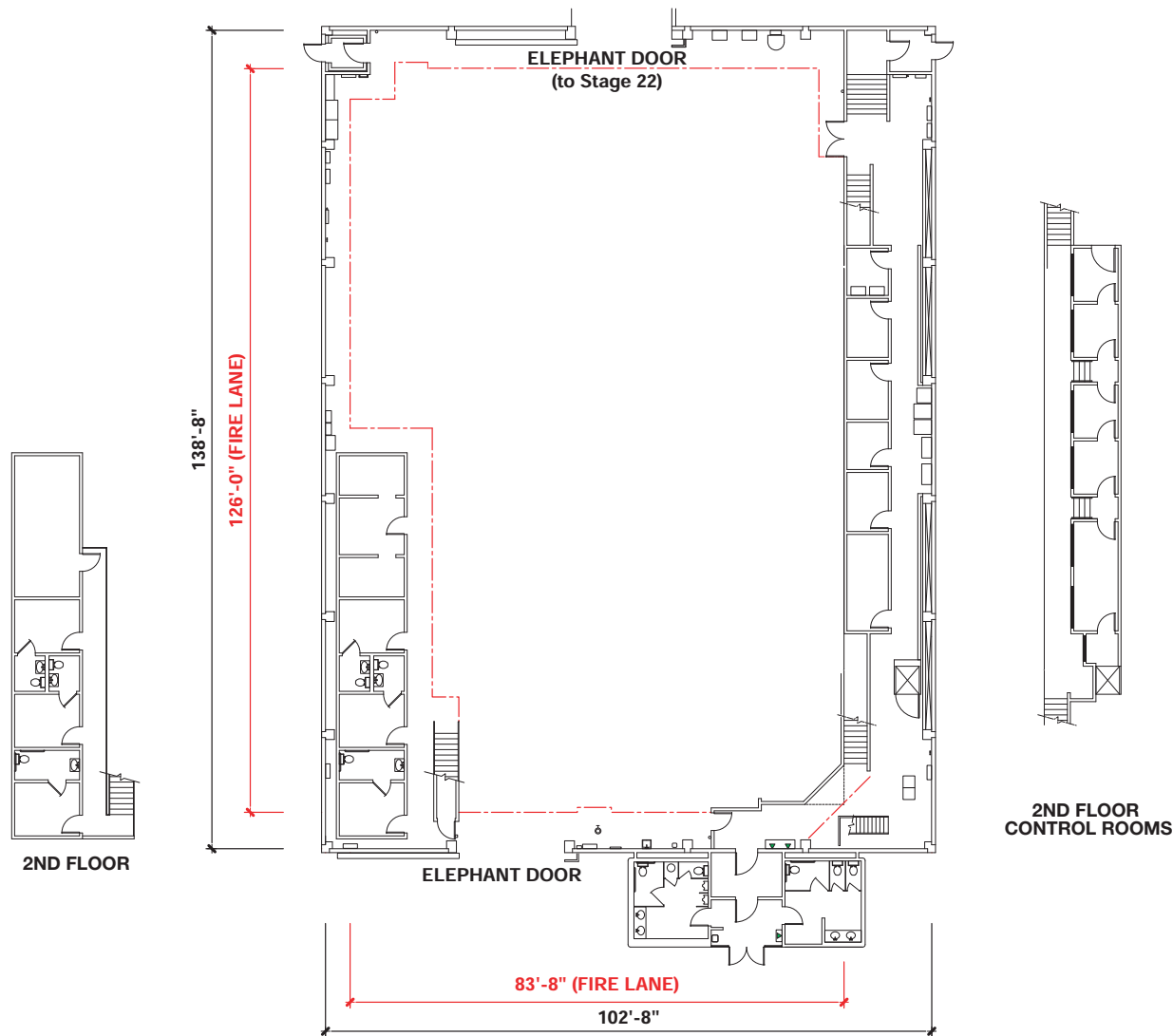


# Stage 21



**STAGE SIZE:**  
 (102' x 138') 14,076 sq. ft.\*  
 Audience rated A-3  
 Maximum crew & audience = 299

**LIVE LOAD CAPACITY OF FLOOR:**  
 Wood floor over concrete

**HEIGHT:**  
 35' to the permanents with catwalks above

**BUILT-IN ROOMS:**  
 6 Dressing Rooms each with private restroom (two handicapped), Hair/Make-up Room, 2 Wardrobe Rooms, 2 Prop Rooms, 2 Set Dressing Rooms, 2 Dimmer Rooms, 2 Sound Booths, Camera Room, 2 AD Rooms, Green Room, Electric Room, Grip Room, Full Crafts Service area

**AUDIENCE CAPACITY:**  
 Approx. 198

**FALL PROTECTION:**  
 100% Tie-off Horizontal Lifeline system

**ELECTRICAL:**  
 A.C. Prod. Lighting: 500 KVA Transformer  
 120/208 volts  
 4-400 amp bull switches  
 3840 total amps

Basic House/Building Power:  
 600 amps / 120/240 volts  
 Single Phase

AC Spider: 225 amps / 120/240 volts  
 Single Phase from Basic House Power

Power for Equipment: 3 Phase:  
 350 amps / 240 volts\*\*  
 \*\*Local 40 tie-in required

D.C. Lighting: Available upon request

**ELEPHANT DOORS:**  
 Two doors approximately:  
 16' Wide x 14' High (interior door)  
 18' Wide x 24' High

**HVAC:**  
 Silent air conditioning

**WATER:**  
 On four perimeter walls  
 Sink on south wall  
 Full sink in Crafts Service Area

\*Stage Dimensions to be field verified.

Downloadable PDF available at [www.foxstudiosstages.com](http://www.foxstudiosstages.com)

**FOX STUDIOS  
 PRODUCTION SERVICES**  
 310.369.2786 / 310.369.4000

™ & © 2010 Fox and its related entities. All rights reserved.



**FOX STUDIOS**  
 10201 W. Pico Blvd.  
 Los Angeles, California 90035  
 310.FOX.INFO / (f)310.969.0468  
[www.foxstudios.com](http://www.foxstudios.com)