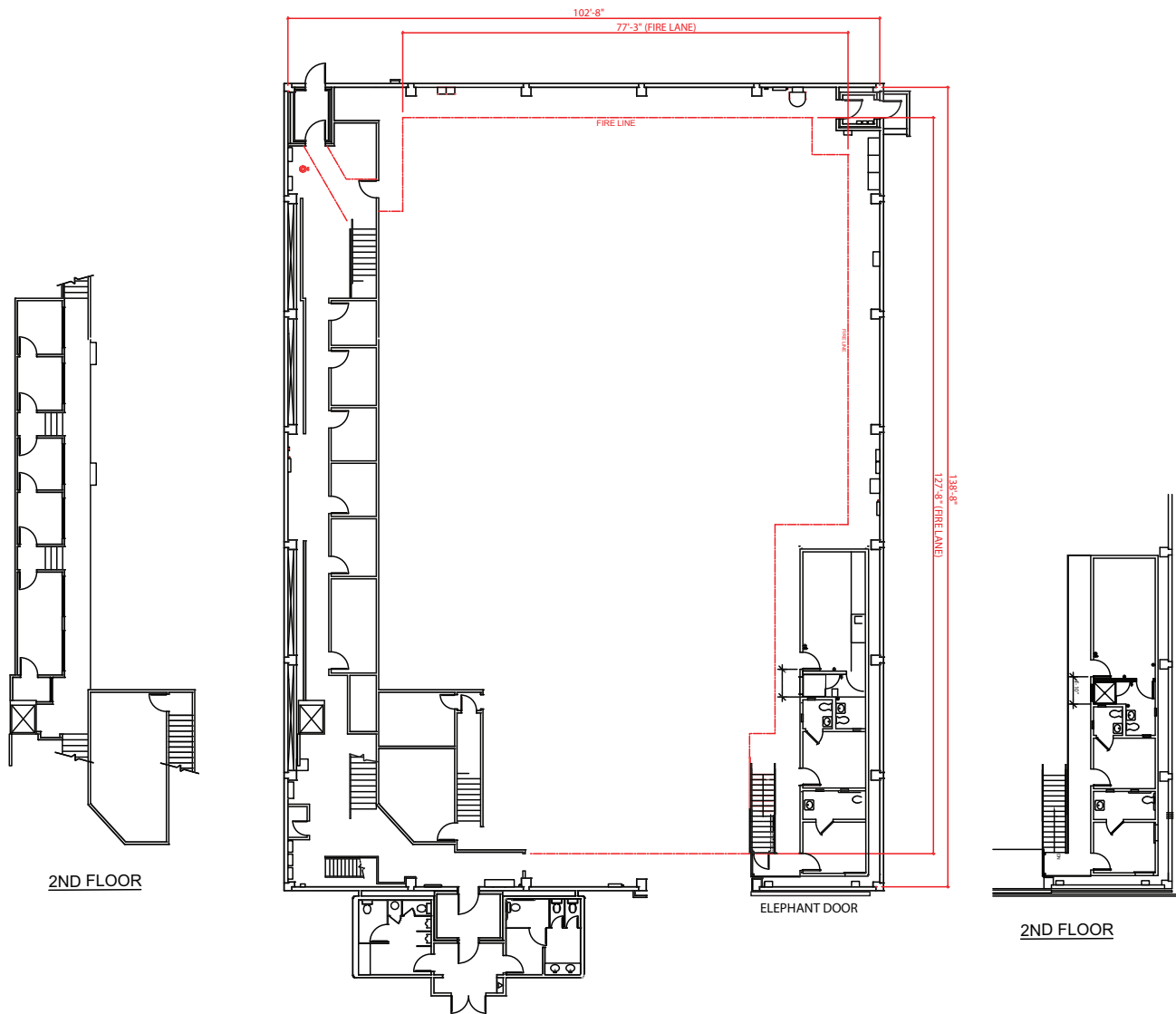


Stage 20



STAGE SIZE:

(102' x 138') 14,076 sq. ft.
Audience rated A-3
Maximum crew & audience = 299

LIVE LOAD CAPACITY OF FLOOR:

Wood floor over concrete

HEIGHT:

35' to the permanents with catwalks above

BUILT-IN ROOMS:

7 Dressing Rooms with private restrooms (two handicapped), Hair/Make-up Room, 2 Wardrobe Rooms, 2 Prop Rooms, 2 Set Dressing Rooms, 2 Dimmer Rooms, 2 Sound Booths, Camera Room, 2 AD Rooms, Green Room, Electric Room, Grip Room, Full Crafts Service area

AUDIENCE CAPACITY:

Approx. 185

FALL PROTECTION:

100% Tie-off Horizontal Lifeline system

ELECTRICAL:

D.C. Lighting: 4800 amps/120 volts
A.C. Prod. Lighting: 500 KVA Transformer
120/208 volts
4-400 amp bull switches
3840 total amps

Basic House/Building Power: 600 amps
120/240 volts
Single Phase

AC Spider: 225 amps
120/240 volts
Single Phase from Basic House Power

Power for Equipment: 3 Phase:
200 amps
240 volts**

**Local 40 tie-in required

ELEPHANT DOORS:

One door approximately: 18' Wide x 24' High

HVAC:

Silent air conditioning

WATER:

On four perimeter walls
Full sink in Crafts Service Area

*Stage Dimensions to be field verified.

Downloadable PDF available at www.foxstudiosstages.com

**FOX STUDIOS
PRODUCTION SERVICES**
310.369.2786 / 310.369.4000

™ & © 2010 Fox and its related entities. All rights reserved.



FOX STUDIOS

10201 W. Pico Blvd.
Los Angeles, California 90035
310.FOX.INFO / (f)310.969.0468
www.foxstudios.com